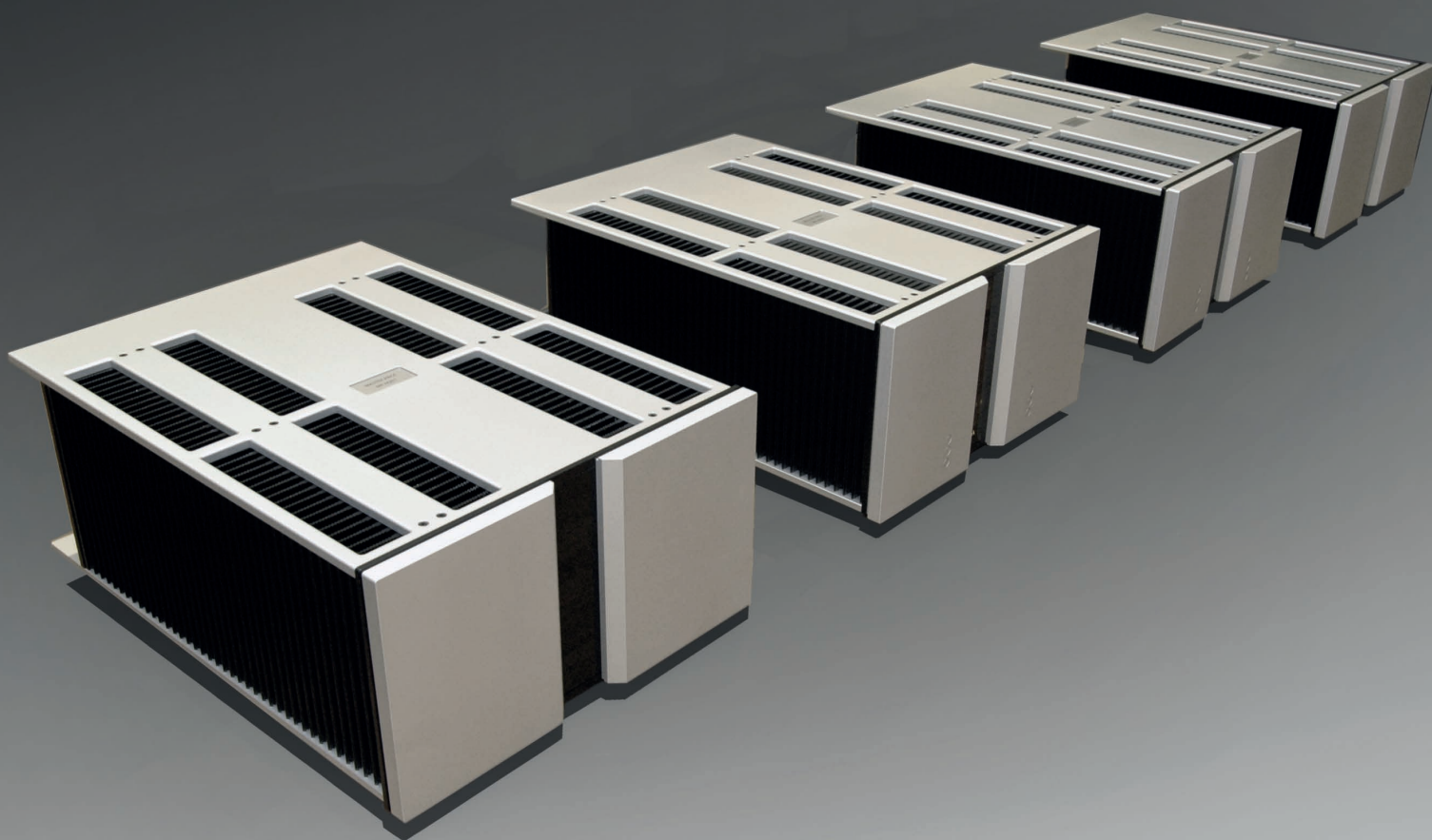


MP-M201

Masterpiece Mono Power Amplifier



Masterpiece Series | *SUPREME*

v i t u s **V A** a u d i o

vitusaudio.com

MP-M201

Masterpiece Mono Power Amplifier

The MP-M201 is a fully balanced zero-global-feedback monaural power amplifier.

This was the toughest design task in Vitus Audio's history so far. Designing a power amplifier specifically meant for bi-amping complex speaker systems, addressing the typical issues in such systems, including their external active crossovers and dedicated amplifiers for the bass system, quickly becomes extremely complex. Then considering the usual approach of no compromise always taken by Vitus Audio's design team, the tasks becomes even greater. The final result however, is nothing short of spectacular,

Separating all possible sources of noise from the amplifier section itself was the first priority, which resulted in all powersupplies and logic/CPU controls being put in its own separate chassis, and the amplifiers in another chassis on its own. This however already create a set of new challenges, especially how to avoid limitations in peak currents between the power supply and the amplifier. On this specific subject there was really one satisfying solution, a special made high current grade cable, with room for enough wires to accommodate all the logic control signals also. A specialist company called "Virginia Panel Corporation" was contacted and is producing a special version of their iCon modules/cables for us for this purpose only.

The separate PSU is operating as a fully regulated supply, including separate regulations for each and every stage in the amplifier - this including the 2 outputstages. Making a normal regulator is not a big deal, but creating one for each outputstage with no limitations in current draw and speed, is a different matter. These specific parts of the regulation were designed with the same approach as the outputstages themselves. To source the regulation stages - 2 pcs of 2.2KVA transformers and about 400.000uF capacitor bank (pr. Ch.) makes sure the supply voltages are as stable and noise free as they can get.

The amplifier obviously share the usual "Vitus Audio" specific design criterias, but added the special features of the bi-amp functionality, optimized configurations and the optional crossover. True balanced, all discrete, zero global feedback taken to the next level of performance.

Overall the 4 chassis MP-M201 is an ultimate statement in poweramplifier design, sound and execution which results in a resolution and dynamic sound with a 3D like soundstage we have never heard before. The first thing that will strike you is the "nothing".. the silence.. the ease of which the resolution overwhelms you and draws you into the music.

INPUT	XLR
Available	1
Sensitivity	0,7 V _{RMS}
Impedance	10KΩ

OUTPUT	Speaker L	Speaker R
High Freq:	1	1
Low Freq:	1	1
Higher Frequencies	100W _{RMS}	Class A / 300W _{RMS} Class AB in 8 Ω
Lower Frequencies	500W _{RMS}	Class AB in 8 Ω
Impedance	75 mΩ	75 mΩ
Frequency response	+800kHz	+800kHz
Signal to noise ratio	>130dB	> 30dB
THD + noise	> 0,01%	> 0,01%

POWER CONSUMPTION	Pr. Channel
Standby	<1W _{RMS}
Full Power	550W _{RMS}

DIMENSIONS	PSU	AMP
Hight	240 mm	240 mm
Width	435 mm	435 mm
Depth	610 mm	610 mm
Weight	~100 Kg	~50 Kg

OPTIONS Available on request only

Active crossover designed for large speaker systems especially with separate bass towers. It includes all needed functions for adjusting for optimal integration of the towers.

