

# DS W2

Our latest addition, recipient of  
‘The world’s best cartridge award’



## Cartridge



World beating optical cartridge technology

The DS-W2 is the successor to our DS-W1 optical cartridge design, which was awarded the title of world's best phono cartridge by two major audio magazines in Germany: Stereo and Audio. This praise helped to establish the popularity of our unique technology, setting a high standard and paving the way for further development. The extensive advancements and refinements of the DS-W2 design have resulted in performance that is far in excess of the already impressive DS-W1.



Boron Cantilever with Micro-ridge stylus

The DS-W2 is equipped with a boron cantilever and Micro-Ridge stylus representing a further upgrade from the Shibata stylus used on its predecessor DS-W1. This combination precisely traces the record groove and yields the utmost quality of sonic reproduction. A hand-crafted, "Natural Rose quartz" LED indicator adds an eye-catching detail to this unique piece of audio technology.

## Equalizer



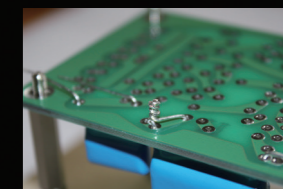
Upgraded equalizer featuring a sophisticated power supply

The DS-W2 equalizer houses 12 large capacitors, each with 56000µF capacity; more than those normally found in a phono pre-amplifier. In use, the benefits of this design choice are obvious, with fantastic musical control and an effortless presentation. A 1.5mm thick pure copper plate bus-bar is employed to connect these capacitors, ensuring maximum power transfer. This also functions as a shielding plate for the transformer, revealing more low-level musical detail. All of the improvements of the DS-W2 equalizer have created a component three times larger than the predecessor DS-W1, and sonic performance is of an even greater magnitude. The result is ultimate enjoyment from your record collection. Expect to hear more from DS Audio.



Fully balanced XLR output

Offering a choice of outputs and low frequency response options, the DS-W2 preamp/equalizer features two sets of RCA and XLR outputs and two separate low frequency cut-off points.



Hand-made in Japan circuit board

Every component part used in our products is tested and evaluated by our expert Japanese technicians. In addition to using a specially printed circuit board, twist-connection of the component legs is further evidence of DS Audio's excellent attention to detail. Each and every product is hand-made and quality assured by our skilled engineers.

### DS-W2 Optical Cartridge

Signal output	Photo-electric Conversion
Channel separation	25db more (1KHz)
Weight	8.1g
Output signal level	50mV more
Canti-lever	Boron
Body material	Aluminum
Needle pressure	1.6g~1.8g(1.7g is recommended)
Stylus	Micro Ridge

### DS-W2 Equalizer for Optical Cartridge

Output voltage	500mV(1kHz)
Output impedance	RCA 120Ω XLR 600Ω
Pre amp input impedance	More than 10kΩ
Input terminal	RCA terminal
Output terminal	RCA terminal×2, XLR terminal×2
Size	W43cm×H10.7cm×D38.4cm
Weight	12.0kg