

# DS 002

The spiritual successor to the DS001, our original optical cartridge design.



## Cartridge



Using vibration system of the same design as DS Master 1 and DS-W2

DS002 has a wire suspension mechanism which is the same design as DS Master 1 and DS-W 2. By implementing it, you realize high channel separation and stable music playback. Moreover, by arranging the position of the slit at the position close to the needle point, it is possible to retrieve information with higher freshness.



Aluminum Cantilever with Shibata stylus

Like the more expensive DS Audio cartridges, the DS 002 cartridge body is machined from aluminum and echoes their distinctive design for best optical performance. The DS 002 features an aluminum cantilever and classic Shibata stylus to accurately reproduce the music recorded on the vinyl record album.

## Equalizer



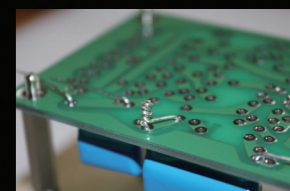
Enhanced power supply circuit

When designing the DS 002, we carefully evaluated each component of the preamp/equalizer. The updated power supply is a key part in the new design. To ensure a high-quality power source for the preamp/equalizer, ten 33000µF capacitors are used, providing effortless power for the highest level of sound quality.



Add shield mechanism

For outstanding signal-to-noise performance, we have incorporated a special shielding structure in the preamp/equalizer design of the DS 002. This shield both isolates internal noise from the power supply while also blocking external RF and other environmental noise. The shield is 1.5mm thick and covers the entire transformer, which ensures the best signal-to-noise performance of the DS 002 preamp/equalizer.



Hand-made in Japan circuit board

Every component part used in our products is tested and evaluated by our expert Japanese technicians. In addition to using a specially printed circuit board, twist-connection of the component legs is further evidence of DS Audio's excellent attention to detail. Each and every product is hand-made and quality assured by our skilled engineers.

### DS002 Optical Cartridge

Signal output	Photo-electric Conversion
Channel separation	25db more (1KHz)
Weight	8.1g
Output signal level	50mV more
Canti-lever	Aluminum
Body material	Aluminum
Needle pressure	1.6g~1.8g(1.7g is recommended)
Stylus	Shibata

### DS002 Equalizer for Optical Cartridge

Output voltage	500mV(1kHz)
Output impedance	RCA 120Ω
Pre amp input impedance	More than 10kΩ
Input terminal	RCA terminal
Output terminal	RCA terminal×2
Size	W310cm×H9.2cm×D23.5cm
Weight	4.7kg